

Collect data...solve problems.

**DATApro**  
Multi-Purpose Recording Meter

# Measure, log and analyze almost anything!

Count pulses, or measure temperature, control & process signals, AC current and much more.



**DATApro™**

**4-Channel  
Recording Meter**



541.388.4774  
Bend, OR USA  
[www.DentInstruments.com](http://www.DentInstruments.com)

(Actual Size)

## One DATApro™ is right for you

Who can use the DATApro? Virtually anyone with a measuring problem. The DATApro series can monitor, store and analyze data from a variety of common sensors, allowing you to make the right decision for your application. Production managers, security supervisors, facilities managers, architects, building owners, meteorologists, researchers, waste management supervisors, and engineers of all types are discovering new applications every day that one of the DATApro Recording Meters can address. It's that versatile!

## Applications

A growing family of DATApro models is available to meet almost any measuring need. Virtually any utility – gas, water, electric, steam, HVAC, compressed air, solid or liquid waste – can be recorded. One DATApro model will correlate utility consumption with inside or outside temperature, while others can measure and record data from manufacturing processes or environmental changes. With the ability to accept pulses and inputs such as 4-20mA, 0-10VDC, temperature, or AC current, one DATApro model is right for you.



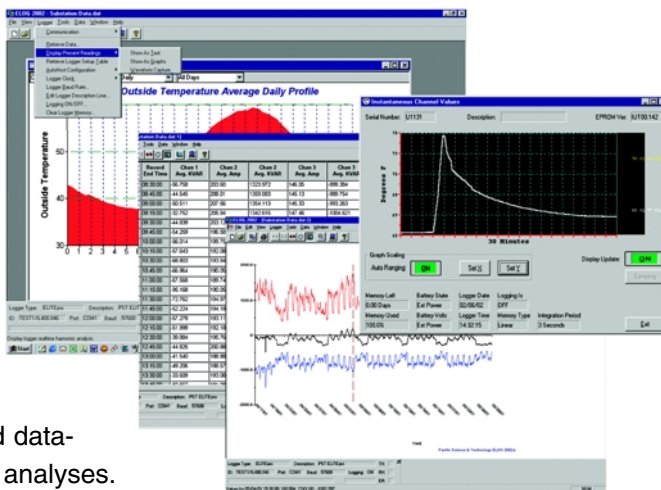
[www.DentInstruments.com](http://www.DentInstruments.com)

## Easy Installation

Installation and connection are both a breeze. Magnetic strips on the housing facilitate mounting on metal cabinets, and a simple 8-position port connects all external inputs. You supply the sensor; we supply the Recorder.

## State of the Art Software

The ELOG software is used to program the meter, display metered values, retrieve and analyze the data. The Windows™ software graphically displays recorded data, performs analyses and allows automatic, remote data collection. Data is also easily exported to popular spreadsheets and databases for special analyses.



*There's a DATApro model for every application*

## Versatile Options

A variety of options will suit your situation:

**Modem** - For long-term monitoring applications an internal modem is available. The modem can be programmed to automatically download data or used to read real-time values.

**Weatherproof** - A custom housing is dust and liquid resistant, allowing the unit to operate in harsh, wet and outdoor environments.

**High Memory** - This is the option you want when recording lots of data. Capacity is quadrupled to store up to 100,000 records between downloads.

## Specifications

|                       |   |
|-----------------------|---|
| Inputs .....          | 4 channels of AC current, DC voltage, DC milliamps, pulse count, or temperature |
| Measurements ..       | Min, Max, Average, Total  |
| Frequency .....       | 10 Hz (pulse) and 50 or 60 Hz (current)   |
| Accuracy .....        | <1% of reading, exclusive of sensor accuracy                                    |
| Baud Rate .....       | Up to 57,600 (direct) or 14,400 (modem)   |
| Resolution .....      | Better than .1% FS for all parameters; 12 bit A/D (1 part in 4,096)             |
| Memory .....          | 128kB (25,000 readings) or 512kB (100,000 readings)                             |
| Sampling Frequency... | 7.68 kHz (128 points per current waveform) or 10 Hz, interrupt driven           |
| Recording Intervals.. | 3, 15, 30 seconds; 1, 2, 5, 10, 15, 20, 30 minutes and 1, 12, 24 hrs.           |
| Real Time Clock..     | Crystal controlled, true calendar, 20 ppm accuracy (<1 min/month)               |
| Battery Life .....    | 3 years @ 1 min. sampling, LED indicator of low battery                         |
| Operating Temp..      | -.7 to 60 oC (20 to 140 oF)   |
| Operating Humidity... | 5% to 95% non-condensing  |
| Dimensions .....      | 8 x 15 x 6 cm (3.2" x 5.9" x 2.4")  |
| Weight .....          | 340 gm (12 ounces)  |